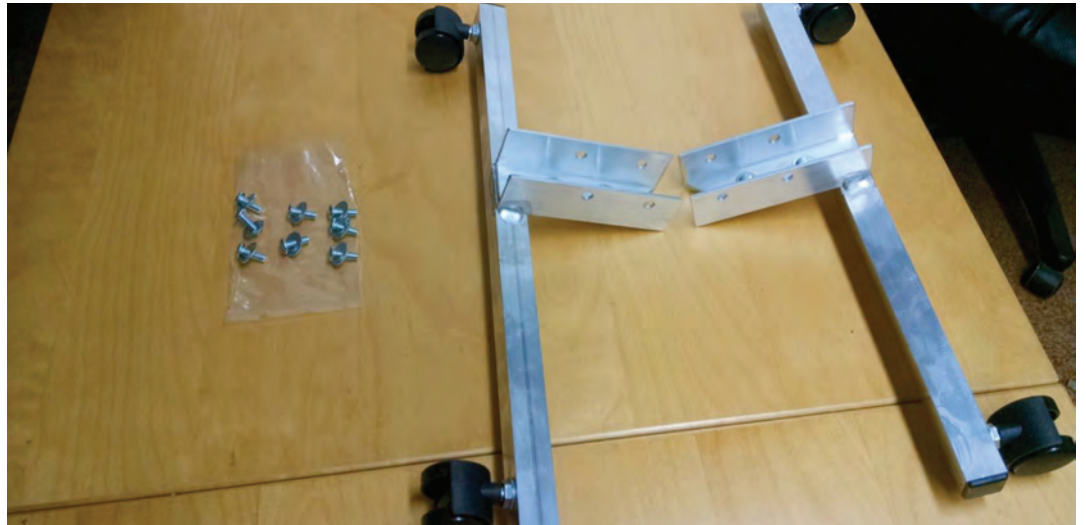


## Rolling Floor Stand (Double-Sided) Assembly

1 of 3

**Kit includes left and right stands, screws, and washers**



- 1** Separate stand and bracket. Remove and save screws and washers.



- 2** Locate red tape on back of mirror panel.



- 3** Supporting mirror over edge of table with plastic covering mirror face, align right stand with angle along side of mirror. Fasten with screws and tighten.



---

## Rolling Floor Stand (Double-Sided) Assembly

---

2 of 3

- 4** Repeat for left side.



- 5** Using the 2nd mirror, attach the bracket the same way with the angle along outer edge of mirror.



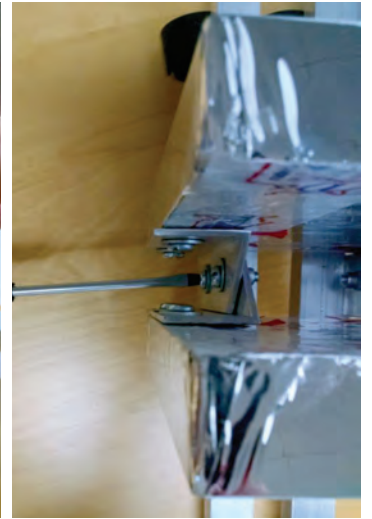
- 6** Join front mirror with back mirror. Be sure that bracket slides over the stand angle.



## Rolling Floor Stand (Double-Sided) Assembly

3 of 3

- 7 Fasten brackets to stands with screws.



**Assembled double mirror rolling floor stand.**

