

Stackable Stand (Horizontal) Assembly

1 of 3

Kit includes:

- (4) 10 - 24" x 1 1/2" round head screws
- (2) #8 - 18 x 1" flat head screws
- (4) 1/4 - 20 x 1" flat head screws
- (4) 1/4 - 20 x 3/4" round head screws with washers
- Foam pads
- (2) tee stands
- (1) bumper bar
- (1) crossbrace (only needed for stands higher than 13" off floor)



- 1 Attach foam pads above and below mirror mounting holes on T-stands.



- 2 Locate "Bumper Bar" and 1/4" flathead screws. Place round corner outwards above threaded inserts on T-stands stop with counter sinks facing up.



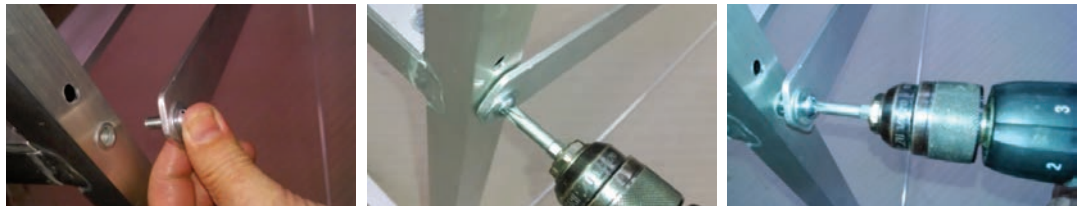
Stackable Stand (Horizontal) Assembly

2 of 3

- 3** Attach crossbrace with 1/4" round head screws into threaded inserts on T-stands. Skip this step if your stands are lower than 13" off floor.



- 4** After all 4 screws are in place, put stand upright on floor and tighten all screws. Skip this step if your stands are lower than 13" off floor.



- 5** Release protective wrap from mirror edge before placing mirror on stand. Secure mirror with 10-24 x 1 1/4" round head screws into threaded insert located by red tape flag.



Stackable Stand (Horizontal) Assembly

3 of 3

- 6** Carefully tip the mirror and stand on its side, showing the bottom of the bumper bar. Drill drive the #8-18 flat head screws in the countersunk holes on bumper bar. Do not over tighten or strip. Set clutch on drill half the full strength setting.



Complete mirrors.

